



This bulletin provides a breakdown of all trauma¹ attendances at Whiston Hospital Accident and Emergency department (AED) between April 2007 and March 2008.

Figure 1 illustrates the number of trauma attendances by month of attendance. Trauma attendance peaked in July (n=4,195), with December (n=3,356) having the least number of trauma attendances.

Figure 1: Total number of trauma attendances by month, April 2007 to March 2008

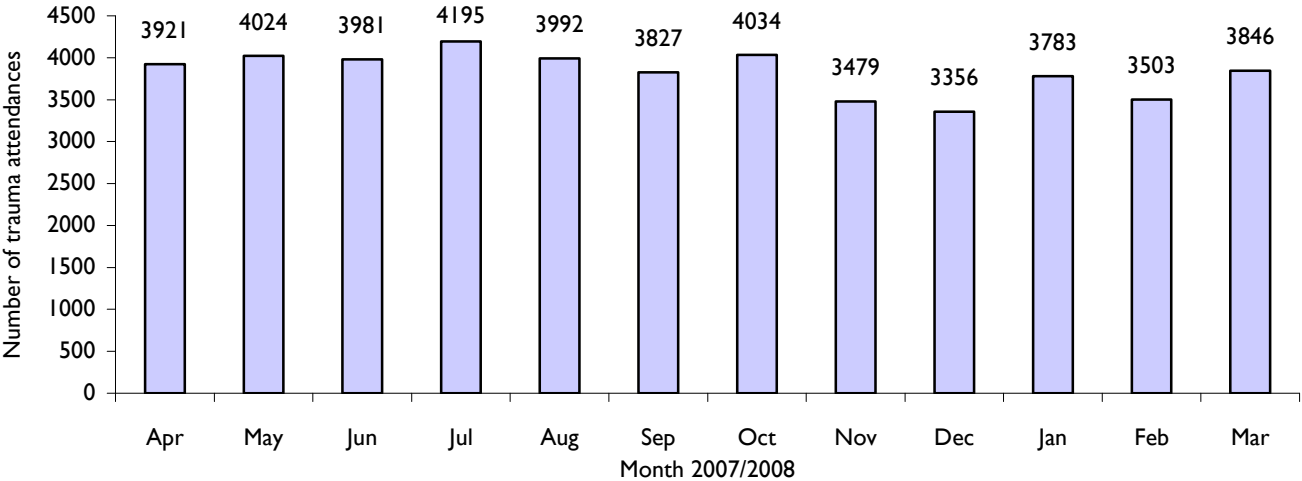


Figure 2 illustrates trauma attendances by gender. For all months there were slightly more male (51%) trauma attendances than female presenting at Whiston Hospital AED.

Figure 2: Gender of trauma attendances by month, April 2007 to March 2008

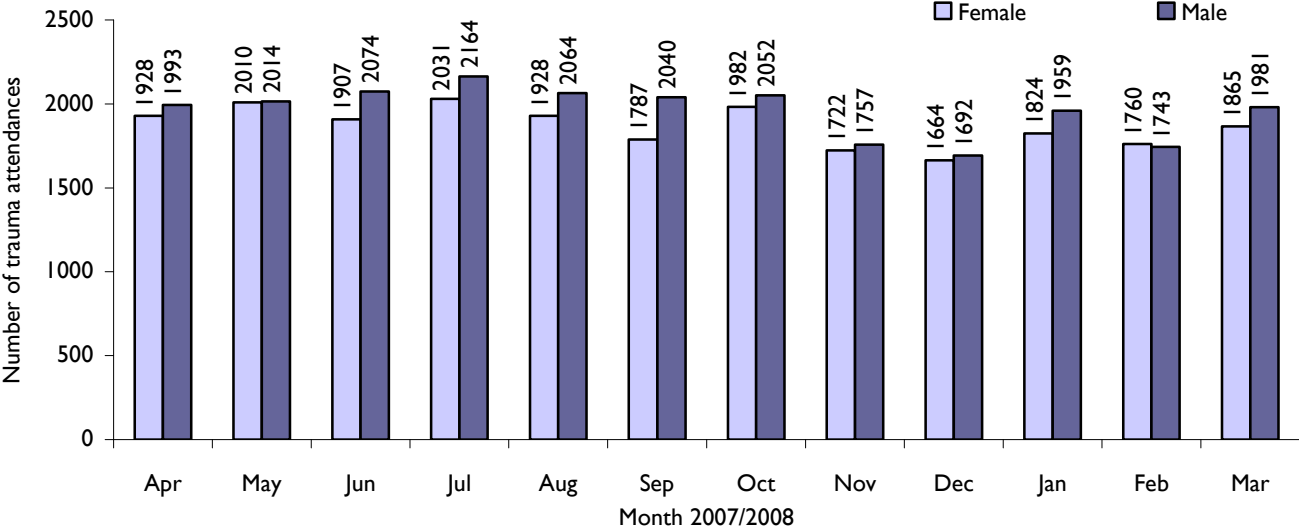
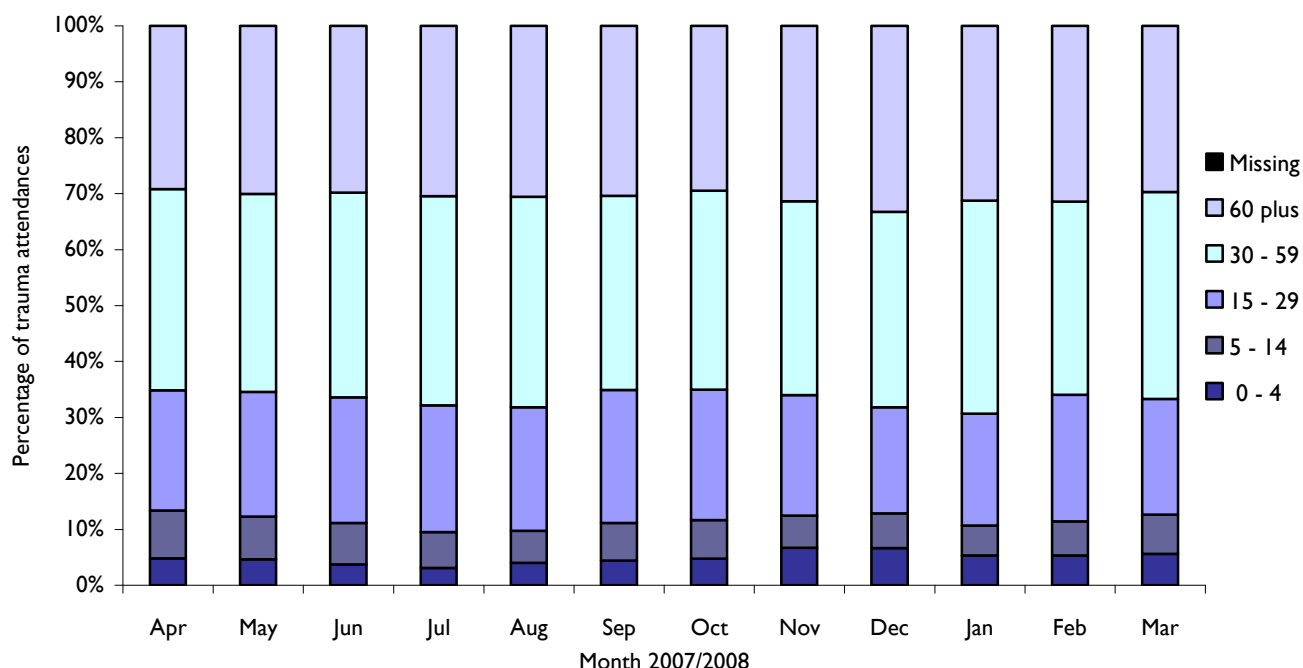


Figure 3 presents the age group of trauma attendances. Across the whole year over a third (36%) of trauma attendances were made by people aged 30 to 59 years and 22% by 15 to 29 year olds.

Figure 3: Age group of trauma attendances by month, April 2007 to March 2008



The majority (96%) of trauma attendances to Whiston AED stated their ethnicity as white (Table 1).

Table 1: Ethnicity of all trauma attendees, April 2007 to March 2008ⁱⁱ

Ethnicity	Apr	May	Jun	Jul	Aug	Sep	Oct	Nov	Dec	Jan	Feb	Mar	Total	%
White	3779	3871	3816	4022	3834	3676	3860	3341	3222	3626	3369	3665	44081	96
Black African	56	47	63	70	53	65	71	43	56	59	39	55	677	1
Other	19	32	26	29	25	23	26	30	19	19	21	27	296	1
Unknown	22	23	31	18	21	14	25	13	20	24	24	20	255	1
Chinese	12	12	10	10	16	14	17	15	13	12	18	20	169	0
Not stated	6	11	12	16	19	12	13	9	5	20	9	36	168	0
Black Caribbean	7	11	9	16	12	11	7	8	5	5	9	9	109	0
Bangladeshi	12	<5	5	7	5	<5	<5	9	5	9	5	<5	70	0
Other Asian background	6	8	<5	<5	<5	<5	<5	5	<5	<5	<5	<5	44	0
Black other	<5	<5	<5	<5	<5	<5	<5	<5	<5	<5	<5	<5	32	0
Pakistani	<5	<5	<5	<5	<5	<5	6	<5	<5	<5	<5	<5	18	0
Indian	<5	<5	<5	<5	<5	<5	<5	<5	<5	<5	<5	<5	13	0
Asian Bangladeshi	<5	<5	<5	<5	<5	<5	<5	<5	<5	<5	<5	<5	9	0
Total	3921	4024	3981	4195	3992	3827	4034	3479	3356	3783	3503	3846	45941	100

Table 2 illustrates the mode of arrival for patients presenting with trauma injuries. The primary mode of arrival for trauma attendances was private transport (58%).

Table 2: Trauma attendances by mode of arrival, April 2007 to March 2008

Mode of arrival	Apr	May	Jun	Jul	Aug	Sep	Oct	Nov	Dec	Jan	Feb	Mar	Total	%
Private transport	2122	1963	2220	2344	2383	2329	2462	2378	2278	2377	1996	1862	26714	58
Ambulance	1372	1310	1336	1345	1378	1364	1425	1307	1258	1389	1221	1273	15978	35
Public transport	158	113	141	127	159	165	175	185	183	154	154	107	1821	4
Walked in	74	61	56	64	75	83	82	81	64	80	61	68	849	2
Other	26	28	48	17	14	17	27	18	21	17	23	19	275	1
Police	16	15	17	19	10	8	14	17	12	8	13	12	161	0
Unknown	15	13	28	5	5	15	10	6	11	9	11	15	143	0
Total	3783	3503	3846	3921	4024	3981	4195	3992	3827	4034	3479	3356	45941	100

Table 3 presents trauma attendances by source of referral. Just over six in ten (61%) of all trauma attendances self-referred.

Table 3: Source of referral for trauma attendances, April 2007 to March 2008

Source of referral	Apr	May	Jun	Jul	Aug	Sep	Oct	Nov	Dec	Jan	Feb	Mar	Total	%
Self-referral	2218	2405	2384	2636	2528	2315	2285	2128	2180	2323	2086	2423	27911	61
Family member	663	566	549	537	564	578	588	403	362	500	532	568	6410	14
GP	514	560	539	433	438	401	602	469	310	405	426	375	5472	12
Emergency services	282	249	242	270	233	266	270	205	240	268	192	230	2947	6
Walk-in-Centre	64	67	70	79	52	63	74	64	61	81	59	64	798	2
Other hospital	53	55	64	75	66	56	67	60	62	56	58	49	721	2
Other referrer	33	39	47	56	45	52	54	45	47	69	66	52	605	1
Employer	35	38	33	36	26	25	40	42	22	23	28	29	377	1
Carer	13	14	15	24	12	22	15	18	28	21	14	19	215	0
Educational establishment	21	13	21	13	14	30	14	24	11	11	21	11	204	0
Police	14	11	9	21	9	6	16	12	23	10	9	16	156	0
Primary care	<5	<5	<5	10	<5	<5	<5	<5	<5	<5	<5	<5	32	0
AED	<5	<5	<5	<5	<5	<5	<5	<5	<5	5	5	<5	29	0
General dental practitioner	<5	<5	<5	<5	<5	<5	<5	<5	<5	<5	<5	<5	15	0
Heath visitor	<5	<5	<5	<5	<5	<5	<5	<5	<5	6	<5	<5	11	0
District nurse	<5	<5	<5	<5	<5	<5	<5	<5	<5	<5	<5	<5	7	0
Optician	<5	<5	<5	<5	<5	<5	<5	<5	<5	<5	<5	<5	5	0
Prison service	<5	<5	<5	<5	<5	<5	<5	<5	<5	<5	<5	<5	5	0
Chiropodist	<5	<5	<5	<5	<5	<5	<5	<5	<5	<5	<5	<5	<5	0
Community Psychiatric Nurse	<5	<5	<5	<5	<5	<5	<5	<5	<5	<5	<5	<5	<5	0
Consultant	<5	<5	<5	<5	<5	<5	<5	<5	<5	<5	<5	<5	<5	0
Dietician	<5	<5	<5	<5	<5	<5	<5	<5	<5	<5	<5	<5	<5	0
Midwife	<5	<5	<5	<5	<5	<5	<5	<5	<5	<5	<5	<5	<5	0
Occupational therapist	<5	<5	<5	<5	<5	<5	<5	<5	<5	<5	<5	<5	<5	0
Orthoptist	<5	<5	<5	<5	<5	<5	<5	<5	<5	<5	<5	<5	<5	0
Physiotherapist	<5	<5	<5	<5	<5	<5	<5	<5	<5	<5	<5	<5	<5	0
Social services	<5	<5	<5	<5	<5	<5	<5	<5	<5	<5	<5	<5	<5	0
Total	3921	4024	3981	4195	3992	3827	4034	3479	3356	3783	3503	3846	45941	100

Table 4 details the injury group of trauma attendances. The most common cause of injury was by other injury (72%). Of those attendances where an injury group was specified 50% were falls and 19% were road traffic accidents.

Table 4: Trauma attendances by injury group, April 2007 to March 2008

Injury group	Apr	May	Jun	Jul	Aug	Sep	Oct	Nov	Dec	Jan	Feb	Mar	Total	%
Other injury	2806	2947	2976	3017	2937	2695	2868	2479	2330	2625	2490	2737	32907	72
Fall	554	552	512	614	551	548	549	472	517	559	521	553	6502	14
RTA	183	192	198	199	176	222	241	241	198	245	202	198	2495	5
Assault	129	108	122	144	111	102	129	101	126	92	96	127	1387	3
Sports injury	113	87	63	80	112	151	125	82	51	93	107	111	1175	3
Ingestion	64	50	50	46	49	51	47	40	58	83	39	58	635	1
Burns and scalds	47	62	42	58	40	42	56	40	51	59	30	40	567	1
Deliberate self-harm	22	23	17	35	16	15	15	23	23	22	17	17	245	1
Substance abuse	<5	<5	<5	<5	<5	<5	<5	<5	<5	5	<5	5	24	0
Firework	<5	<5	<5	<5	<5	<5	<5	<5	<5	<5	<5	<5	<5	0
Total	3921	4024	3981	4195	3992	3827	4034	3479	3356	3783	3503	3846	45941	100

Table 5 shows the discharge destination of trauma attendances; over a third (35%) of attendees were discharged requiring no follow-up treatment.

Table 5: Discharge destination of all trauma attendees, April 2007 to March 2008

Discharge	Apr	May	Jun	Jul	Aug	Sep	Oct	Nov	Dec	Jan	Feb	Mar	Total	%
Discharged no follow-up	1340	1398	1339	1409	1468	1405	1408	1158	1191	1306	1192	1317	15931	35
Admissions	941	955	947	934	918	1003	903	716	799	752	793	899	10560	23
Emergency admissions unit	852	873	779	892	777	608	876	879	717	967	790	804	9814	21
Discharged to GP	232	280	311	342	268	279	280	221	184	245	232	268	3142	7
Did not wait	160	141	165	179	189	124	152	144	121	154	168	144	1841	4
Fracture clinic	140	114	138	130	109	129	140	93	107	97	100	131	1428	3
Other	78	69	108	91	73	88	72	75	73	64	55	114	960	2
AED review clinic	49	45	51	46	63	56	33	41	34	51	44	42	555	1
Physiotherapy clinic	41	57	33	52	42	48	66	45	41	36	30	36	527	1
Outpatient clinic	20	33	30	29	27	27	22	33	29	34	40	26	350	1
Sent to other hospital	22	14	25	25	23	20	26	26	22	35	17	20	275	1
Discharged with ear/nose/throat appointment at Whiston	19	17	16	23	17	15	24	25	14	20	25	22	237	1
Return for treatment	23	20	20	27	14	15	21	19	14	17	13	15	218	0
Sent to GP assessment unit	<5	5	9	8	<5	9	8	<5	9	5	<5	5	72	0
Discharged returning to GP clinic at Whiston AED	<5	<5	10	8	<5	<5	<5	<5	<5	<5	<5	<5	31	0
Total	3921	4024	3981	4195	3992	3827	4034	3479	3356	3783	3503	3846	45941	100

Published November 2008

Dan Hungerford (TIIG Analyst)

Centre for Public Health, Research Directorate, Faculty of Health and Applied Social Sciences, Liverpool John Moores University
5th Floor, Kingsway House, Liverpool, L3 2AJ

Tel: 0151 231 8724 Email: d.j.hungerford@ljmu.ac.uk

Website: www.tiig.info (please note that all data requests should be made through the TIIG website)

ⁱTrauma refers to all AED attendances presenting as a result of an intentional or unintentional injury.

ⁱⁱPlease note that all numbers less than five have been suppressed in line with patient confidentiality and if there is only one number <5 in a category then two numbers will be suppressed at the next level (e.g. <6) in order to prevent back calculations from totals.